

TC4M004-C

适合于1.2"探测器的 远心镜头,放大倍率:4,00 x, C接口

参数

放大	(x)	4.000
图像圈 Ø	(mm)	22.0

物体的视野 (8)

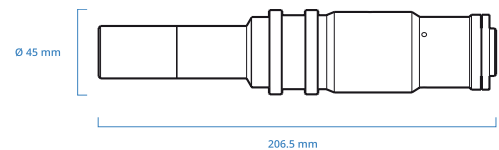
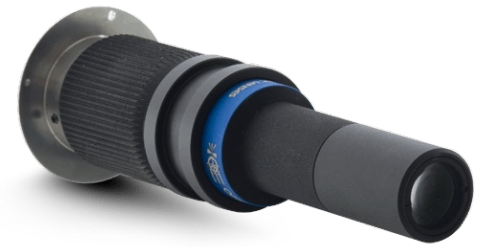
KAI-2020 14.8毫米对角线 w x h 11.84 x 8.88	(mm x mm)	3.0 x 2.2
KAI-04050 16 毫米 对角线 w x h 12.8 x 9.6	(mm x mm)	3.2 x 2.4
KAI-4022/4021 21.5 毫米 对角线 w x h 15.2 x 15.2	(mm x mm)	3.8 x 3.8
KAI-08050 22.6 毫米 对角线 w x h 18.1 x 13.6 (7)	(mm x mm)	4.5 x 3.4

光学说明书

操作距离 (1)	(mm)	56.0
wF/# (2)		22
(最大) 典型的远心 (3)	(deg)	< 0.08 (0.10)
典型的失真 (最大) (4)	(%)	< 0.08 (0.10)
景深 (5)	(mm)	0.1
CTF@ 50 lp/mm	(%)	> 30

机械性能

接口		C
长度 (6)	(mm)	206.4
直径	(mm)	45
重量	(g)	220



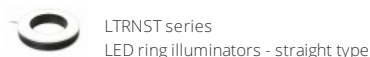
注释

- 工作距离：机器前端与物体前端之间的距离 其设定在标称值的+/-3%可达到最佳分辨率与最小畸变。
- 工作F值：当被测物体未放置于离镜头无限远时的真实F值。也可根据需要提供更小的光圈。
- 镜头内主光线的最大斜率角度：当该角度被转换为毫拉德时，它表示镜头在拍摄时每毫米物体位移的最大测量误差。
- 相比理想化，无畸变的图像，其真实的图像偏差率：列出了典型(平均值)和最大(保证)值。
- 在景深的边缘，其图像依然能用于测量。但为了获得更好的图像，应考虑采用标称景深的一半。
- 从镜头最前端的机械结构到相机法兰的长度。使用KAI-08050 (22.6 mm对角线) 探测器时，TC 4M yyy镜头的视野在图像边缘会呈现一些光晕，因为这些镜头是针对1.2"(21.5mm对角线) 探测器而设计。当用“Ø =”表示视野范围时，该直径的圆形物体其图像完全内切在探测器上。

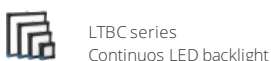
兼容产品



LTCLHP023-R	Telecentric HP illuminator, beam diameter 16 mm, red
LTCLHP023-G	Telecentric HP illuminator, beam diameter 16 mm, green
LTCLHP023-B	Telecentric HP illuminator, beam diameter 16 mm, blue
LTCLHP023-W	Telecentric HP illuminator, beam diameter 16 mm, white



LTRN023RD	Ring LED illuminator, inner diameter 28 mm, straight type, red 630 nm
LTRN023GR	Ring LED illuminator, inner diameter 28 mm, straight type, green 525 nm
LTRN023BL	Ring LED illuminator, inner diameter 28 mm, straight type, blue 470 nm
LTRN023NW	环形照明器, 白色



LTBC054054-W	Continuous LED backlight, 54x54 illumination area, white
--------------	--

All product specifications and data are subject to change without notice to improve reliability, functionality, design or other. Photos and pictures are for illustration purposes only.


**CMHO 系列
夹具机构**
CMHO023
机械固定架

LTLAIC series

Continuous LED low angle diffused ringlights

RT-DLR2-60-050-2-W-24V-FL Continuous LED low angle diffused ringlight, inner diameter 18 mm, 60°, white

RT-DLR2-60-050-2-R-24V-FL Continuous LED low angle diffused ringlight, inner diameter 18 mm, 60°, red

RT-DLR2-60-050-2-G-24V-FL Continuous LED low angle diffused ringlight, inner diameter 18 mm, 60°, green

RT-DLR2-60-050-2-B-24V-FL Continuous LED low angle diffused ringlight, inner diameter 18 mm, 60°, blue


LTLADC series

Continuous LED low angle direct ringlights

RT-LLA-75-130-3-W-24V-FL Continuous LED low angle direct ringlights, inner diameter 94 mm, 75°, white

RT-LLA-75-130-3-R-24V-FL Continuous LED low angle direct ringlights, inner diameter 94 mm, 75°, red

RT-LLA-75-130-3-G-24V-FL Continuous LED low angle direct ringlights, inner diameter 94 mm, 75°, green

RT-LLA-75-130-3-B-24V-FL Continuous LED low angle direct ringlights, inner diameter 94 mm, 75°, blue


LTRNDC series

Continuous LED direct ringlights

RT-LSW-15-050-2-W-24V-FL Continuous LED direct ringlight, inner diameter 28 mm, 15°, white

RT-LSW-15-050-2-R-24V-FL Continuous LED direct ringlight, inner diameter 28 mm, 15°, red

RT-LSW-15-050-2-G-24V-FL Continuous LED direct ringlight, inner diameter 28 mm, 15°, green

RT-LSW-15-050-2-B-24V-FL Continuous LED direct ringlight, inner diameter 28 mm, 15°, blue

RT-LSW-45-070-3-W-24V-FL Continuous LED direct ringlight, inner diameter 35 mm, 45°, white

RT-LSW-45-070-3-R-24V-FL Continuous LED direct ringlight, inner diameter 35 mm, 45°, red

RT-LSW-45-070-3-G-24V-FL Continuous LED direct ringlight, inner diameter 35 mm, 45°, green

RT-LSW-45-070-3-B-24V-FL Continuous LED direct ringlight, inner diameter 35 mm, 45°, blue


LTBFC series

Continuous flat side-emitting LED backlights

RT-BHDS-25X36-1-W-24V-FL Continuous flat side-emitting LED backlight, one side edge to edge type, 36X25 illumination area, white

RT-BHDS-25X36-1-R-24V-FL Continuous flat side-emitting LED backlight, one side edge to edge type, 36X25 illumination area, red

RT-BHDS-25X36-1-G-24V-FL Continuous flat side-emitting LED backlight, one side edge to edge type, 36X25 illumination area, green

RT-BHDS-25X36-1-B-24V-FL Continuous flat side-emitting LED backlight, one side edge to edge type, 36X25 illumination area, blue


LTBRDC series

Continuous LED bar lights

RT-LBRX-00-040-6-W-24V-FL Continuous LED bar light, 40X26.3 illumination area, white

RT-LBRX-00-040-6-R-24V-FL Continuous LED bar light, 40X26.3 illumination area, red

RT-LBRX-00-040-6-G-24V-FL Continuous LED bar light, 40X26.3 illumination area, green

RT-LBRX-00-040-6-B-24V-FL Continuous LED bar light, 40X26.3 illumination area, blue


LTCXC series

Continuous LED coaxial lights

RT-CAS2-00-025-X-W-24V-FL Continuous LED coaxial light, 27x27 active area, white

RT-CAS2-00-025-X-R-24V-FL Continuous LED coaxial light, 27x27 active area, red

RT-CAS2-00-025-X-G-24V-FL Continuous LED coaxial light, 27x27 active area, green

RT-CAS2-00-025-X-B-24V-FL Continuous LED coaxial light, 27x27 active area, blue